

Our 'Word of the Week' is: **prominent**

Can you use it in a sentence?

Write it down here:



Reading

Enjoy your new book and remember to quiz when you have finished it.



Spellings

See the separate sheet with your spellings. It's important that you practise these often and understand the rule or rhyme.

Handwriting: Let's learn our Year 5/6 words while practising your neatest joined handwriting.

existence

existence

explanation

explanation

familiar

familiar

foreign

foreign

forty

forty

Maths - Don't forget to keep working on your Timestables skills!

Spend 10 minutes on

TTRock Stars

and we'll see who gets the trophy at the end of the week.



Christmas songs.

Spend time learning our Christmas songs. You will find the link for the music on the school website (pls ask your parents)

- Elton John Step Into Christmas
- Calypso Carol



This extract is taken from Chapter 9, *The Bloodbottler from 'The BFG'*.

The Bloodbottler was a gruesome sight. There was black hair sprouting on his chest and arms and on his stomach. The hair on his head was long and dark and tangled. His foul face was round and squashy-looking. The eyes were tiny holes. The nose was small. But the mouth was huge. It spread right across the face almost ear to ear, and it had lips that were like two gigantic purple frankfurters lying one on top of the other. Craggy yellow teeth stuck out between the two purple frankfurter lips, and rivers of spit ran down over the chin.

It was not in the least difficult to believe that this ghastly brute ate people every night.

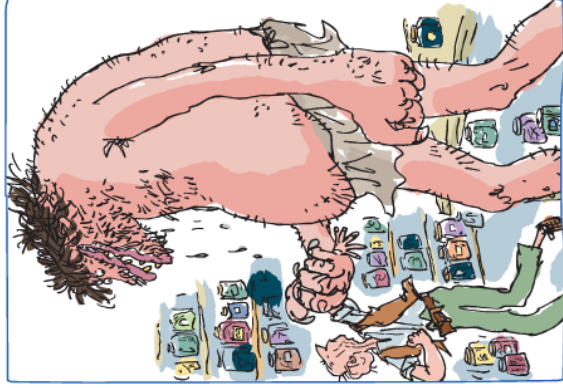
The Bloodbottler, still holding the BFG by the arm, was examining the rows and rows of bottles.

'You and your pibbling bottles!' he shouted. 'What is you putting in them?'

'Nothing that would interest you,' the BFG answered. 'You is only interested in guzzling human beans.'

'And you is dotty as a **DOGSWOGGLER!**' cried the Bloodbottler.

Soon the Bloodbottler would be coming back, Sophie told herself, and he was bound to search the tabletop. But she couldn't possibly jump off the table. It was twelve feet high. She'd break a leg. The snozzcumber, although it was as thick as a perambulator, was not going to hide her if the Bloodbottler picked it up. She examined the chewed-off end. It had large seeds in the middle, each one as big as a melon. They were embedded in soft slimy stuff. Taking care to stay out of sight, Sophie reached forward and scooped away half a dozen of these seeds. This left a hole in the middle of the snozzcumber large enough for her to crouch in so long as she rolled herself up into a ball. She crawled into it. It was a wet and slimy hiding place, but what did that matter if it was going to save her from being eaten.



The Bloodbottler and the BFG were coming back towards the table now. The BFG was nearly fainting with fear. Any moment, he was telling himself, Sophie would be discovered and eaten.

Suddenly, the Bloodbottler grabbed the half-eaten snozzcumber. The BFG stared at the bare table. *Sophie, where is you? he thought desperately.*

You cannot possibly be jumping off that high table, so where is you hiding, Sophie?

'So this is the filthy rotsome **GLUBBAGE** you is eating!' boomed the Bloodbottler, holding up the partly eaten snozzcumber. 'You must be cockles to be guzzling such

RUBBSQUASHI'

For a moment, the Bloodbottler seemed to have forgotten about his search for Sophie. The BFG decided to lead him further off the track.

'That is the **SCRUMDIDDLYUMPTIOUS** snozzcumber,' he said. 'I is guzzling it gleefully every night and day. Is you never trying a snozzcumber, Bloodbottler?'

'Human beans is juicier,' the Bloodbottler said.

'You is talking **ROMMYTOT**,' the BFG said, growing braver by the second. He was thinking that if only he could get the Bloodbottler to take one bite of the repulsive vegetable, the sheer foulness of its flavour would send him bellowing out of the cave.

'I is happy to let you sample it,' the BFG went on. 'But please, when you see how truly glumptious it is, do not be guzzling the whole thing. Leave me a little snitchet for my supper.'

The Bloodbottler stared suspiciously with small piggy eyes at the snozzcumber.

Sophie, crouching inside the chewed-off end, began to tremble all over.

'You is not switchfiddling me, is you?' said the Bloodbottler.

'**NEVER!**' cried the BFG passionately. 'Take a bite and I am positive you will be shouting out oh how scrumdiddlyumptious this wonder-veg is!'

The BFG could see the greedy Bloodbottler's mouth beginning to water more than ever at the prospect of extra food.



Reading - The BFG

Read through the extract by Roald Dahl and answer the questions below.

1. Which adjectives are used to describe the Bloodbottler's features? Tick **two**.

- craggy
- grubby
- horrible
- tangled

2. Draw **four** lines and match each word from the text to its correct meaning.

sprouting

someone who is
cruel and unkind

foul

starting to grow

ghastly

bad or unpleasant

brute

frightening or horrible

3. What did Sophie do before climbing into the snozzcumber?

4. **'You and your pibbling bottles!' he shouted.**

Find and copy **two** synonyms of 'shouted' that the Bloodbottler uses.

- _____
- _____

5. Fill in the missing words.

'That is the **SCRUMDIDDLYUMPTIOUS** snozzcumber,' he said. 'I is _____ it
_____ every night and day. Is you never trying a snozzcumber, Bloodbottler?'

6. How can you tell that the BFG is concerned about Sophie?

7. Look for an example of a metaphor in the text. How does this add meaning?

SPaG (Remember to use your SPaG map if needed.)

Let's recap some of our learning this term so far.

Section 1

Place the correct punctuation into this sentence to show the relative clause.

Kirsty who was a very talented dancer performed in the school musical.



Section 2

Can you think of more formal synonyms to replace these past tense verbs? (Use a thesaurus if you need to!)

found _____

asked _____

Section 4

Mr Whoops has accidentally jumbled up two adverbs that show frequency. Can you help him to unjumble them?

QUFRENYLET

NETFO



Section 5

Add a suffix to the word 'beauty' to create a verb:



Section 3

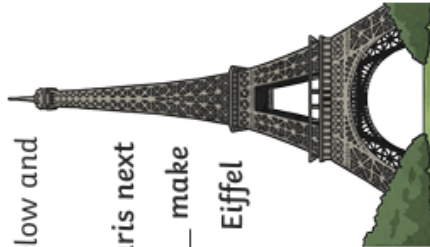
Look at the sentence below and add two modal verbs:

I _____ go to Paris next

year and I _____ make

sure that I visit the Eiffel

Tower while I'm there.



Section 6

Can you add appropriate punctuation around the parenthesis in this sentence?

William Shakespeare who was born in the 16th century is the most famous playwright in history.

